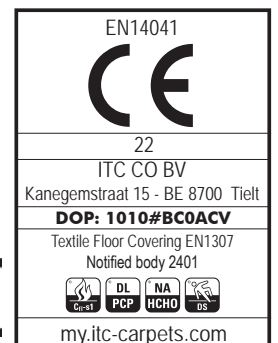


Pro Nature

CONSTRUCTION	Flat woven
STRUCTURE	Tissé à plat
STRUKTUR	Flachgewebe
STRUCTUUR	Vlak geweven
PILE MATERIAL	100% PP
COMPOSITION DU VELOURS	
POLMATERIAL	
POOLMATERIAAL	
PILE WEIGHT	Ca. 1.100 gr/m ²
POIDS DU VELOURS	
POLEINSATZGEWICHT	
POOLGEWICHT	
TOTAL WEIGHT	Ca. 1.635 gr/m ²
POIDS TOTAL	
GESAMTGEWICHT	
TOTAAL GEWICHT	
TOTAL HEIGHT	Ca. 5,4 mm
EPAISSEUR TOTALE	
GESAMTHÖHE	
TOTAAL DIKTE	
TUFT DENSITY	Ca. 70 400/m ²
NOMBRES DE POINTS	
NOPPENZAHL	
AANTAL PUNTEN	
CLASSIFICATION	EN 1307
CLASSEMENT	33 - LC1
KLASSIFIKATION	
CLASSIFICATIE	
CASTOR CHAIR SUITABILITY	EN 985
CHAISE À ROULETTES	A: intensive use
STUHLROLLENEIGNUNG	
ROLSTOELGESCHIKTHEID	
STAIR SUITABILITY	EN 1963
ESCALIERS	A: intensive use
TREPPENEIGNUNG	
TRAPPENGESCHIKTHEID	
PERMANENTLY ANTISTATIC	ISO 6356
ANTISTATIQUE PERMANENT	< 2 kV
PERMANENT ANTISTATISCH	
PERMANENT ANTISTATISCH	
IMPACT NOISE RATING	ISO 140-8
ISOLATION PHONIQUE	18 dB ΔLw
TRITTSCHALLVERBESSERUNG	
GELUIDSISOLATIE	
SOUND ABSORPTION	ISO 354
ABSORPTION PHONIQUE	0.15 Qw
SCHALLABSORPTIONSGRAD	
GELUIDSABSORPTIE	

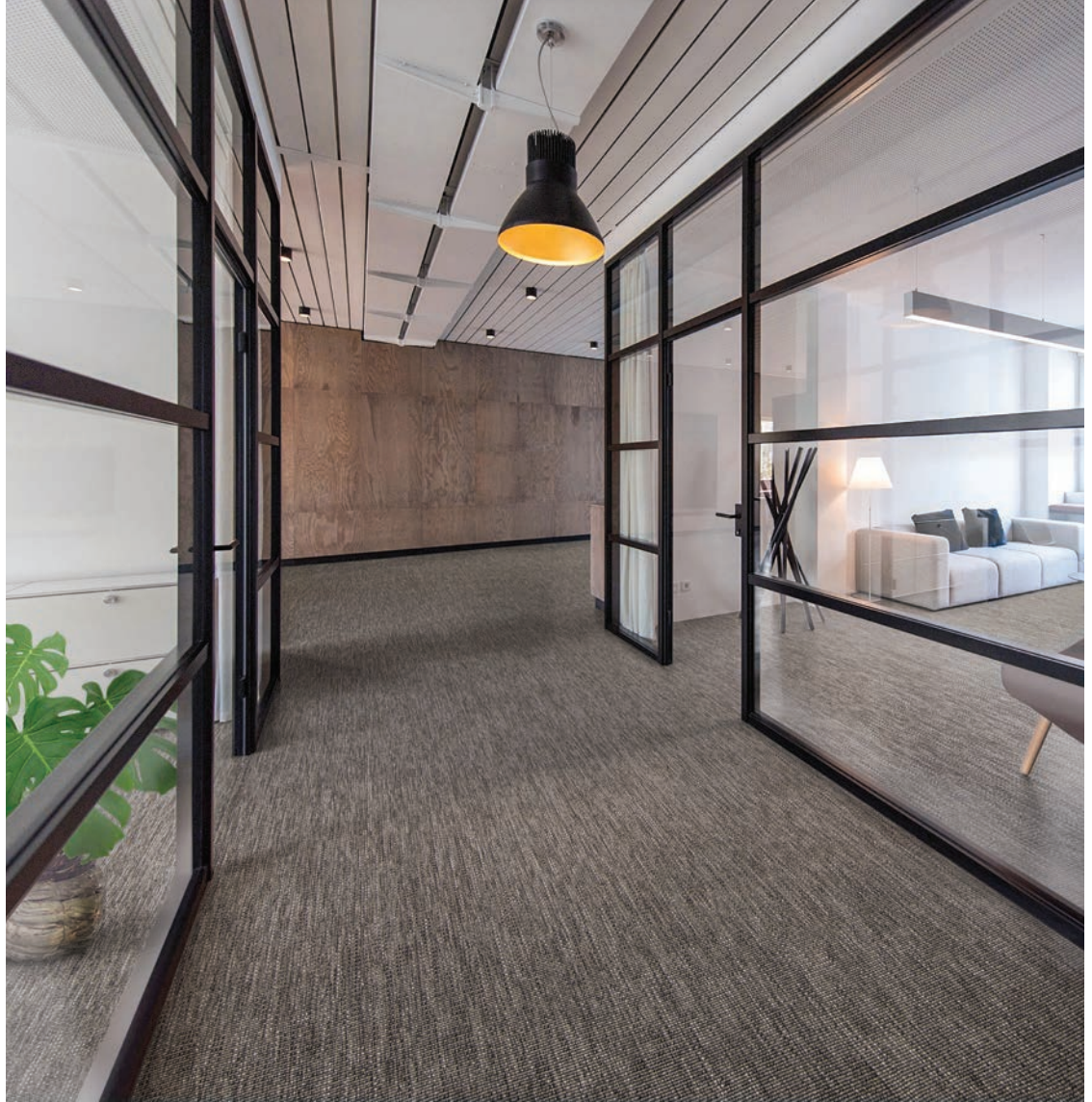
THERMAL RESISTANCE	ISO 8302
RÉSISTANCE THERMIQUE	0.052 m ² K/W
WÄRMEDURCHLASSWIDERSTAND	
WARMTEDOORLAATWEERSTAND	
FASTNESS TO LIGHT	ISO 105-B02
SOLIDITÉ A LA LUMIÈRE	≥ 7
LICHTECHTHEIT	
LICHTECHTHEID	
COLOUR FASTNESS TO WATER	EN ISO 105-E01
SOLIDITÉ À L'EAU	≥ 4-5
WASSERECHTHEIT	
WATERECHTHEID	
RUBBING FASTNESS	EN ISO 105-X12
SOLIDITÉ AU FROTTEMENT	≥ 4
REIBECHTHEIT	
WRIJFECHTHEID	
FIRE RESISTANCE	EN 13501-1
COMPORTEMENT AU FEU	Cfl-s1 if glued
BRENNVERHALTEN	
BRANDGEDRAG	
NUMBER OF COLOURS	24
NOMBRES DE COULEURS	
ANZAHL FARBEN	
AANTAL KLEUREN	
WIDTH	EN ISO 3018
LARGEUR	ca. 400 cm
BREITE	
BREEDTE	

PERMANENTLY ANTISTATIC	ISO 6356
ANTISTATIQUE PERMANENT	< 2 kV
PERMANENT ANTISTATISCH	
PERMANENT ANTISTATISCH	
IMPACT NOISE RATING	ISO 140-8
ISOLATION PHONIQUE	18 dB ΔLw
TRITTSCHALLVERBESSERUNG	
GELUIDSISOLATIE	
SOUND ABSORPTION	ISO 354
ABSORPTION PHONIQUE	0.15 Qw
SCHALLABSORPTIONSGRAD	
GELUIDSABSORPTIE	



Pro Nature

Salix



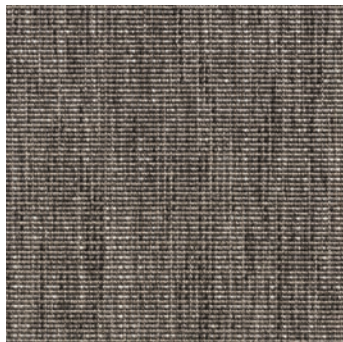
6302 92



6302 95



6302 98



6302 80



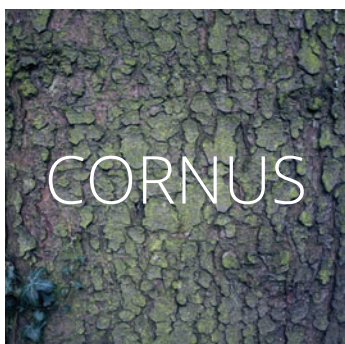
6302 78



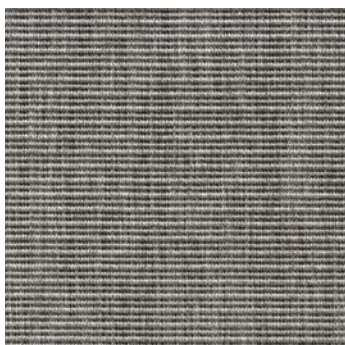
6302 68

Pro Nature

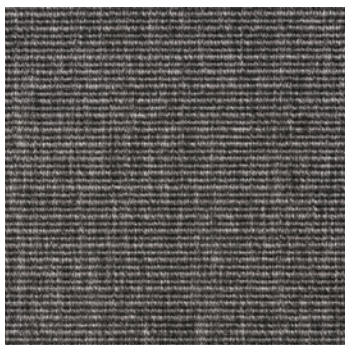
Cornus



6339 92



6339 95



6339 98



6339 80



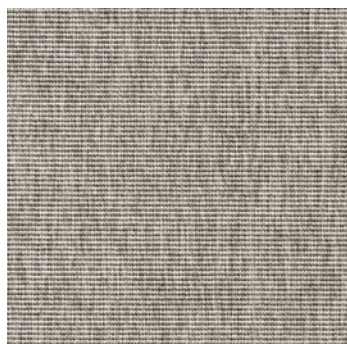
6339 78



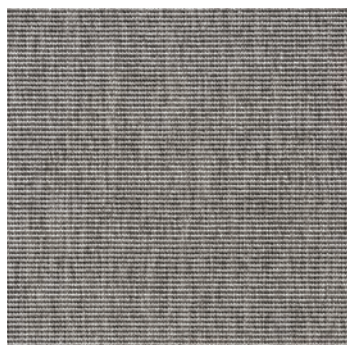
6339 68

Pro Nature

Robinia



6300 92



6300 95



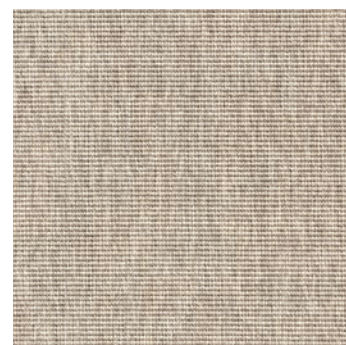
6300 98



6300 80



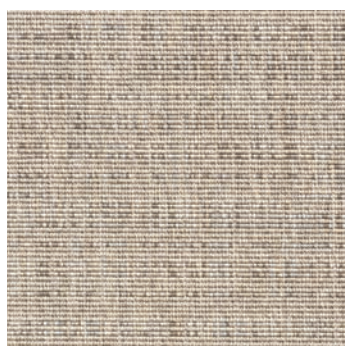
6300 78



6300 68

Pro Nature

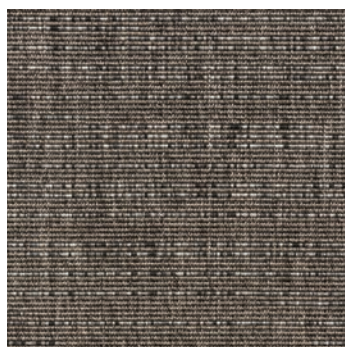
Betula



6335 68



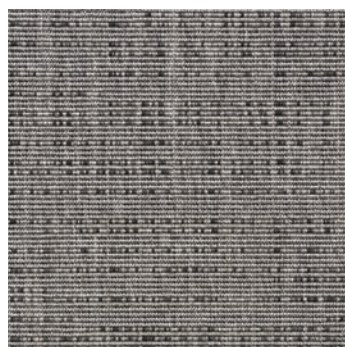
6335 78



6335 80



6335 98



6335 95



6335 92