

Gauge	1/10
Manufacturing	Cut pile
Pile description	Saphira
Primary backing	Woven
Pile weight	750 gr/m ²
Number of tufts	173.228 /m ²
Secondary backing	Luxuryback
Width	400 cm
Total weight	1680 gr/m ²
Total height	9 mm
Pile In/Out	Out
Roll length	30 lm
DOP	1087#01036/15263/L
Fire classification	Efl (tbc)
Use classification	22
TOG rating	1,2



Available colours Luxuryback | 400 cm 107 | 108 | 158 | 312 | 334 | 338 | 770 |

Colour legend	107	Arctic Ice	108	Apollo	158	Anthracite
	312	Almond	334	Mushroom	338	Caramel
	770	Tan				



These details are approximate. Complete specification details and associated certificates together with tolerances applying to the above can be provided upon request. We reserve the right to modify technical specifications without prior notice. Due to method of manufacture perfect pattern and/or colour matching can not be guaranteed. In cut-pile carpeting, in rare cases, shading/pile reversal may occur without affecting its fitness for use. Shading/pile reversal can not be considered as a manufacturing or a material defect and will not affect the durability of the carpet.

BIG Floorcoverings nv Rijksweg 442 | 8710 Wielsbeke - Belgium | T +32 (0)56 67 42 11 | F +32 (0)56 67 48 40 | www.ideal-bintg.com

31.01.2022 | SNS-PR-LSO | ISO N090N02/2/01-01-10



Beaulieu
International
Group



107 - 400 cm



108 - 400 cm



158 - 400 cm



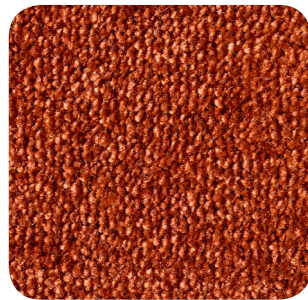
312 - 400 cm



334 - 400 cm



338 - 400 cm



770 - 400 cm